



The ***Professional***
AGRICULTURAL
Mechanical Warranty

TARIFFS 2014

In case of a breakdown
don't wait for
the thaw



010114 - v0

www.eurola-eu.co.uk
Specialist of the mechanical warranty



CONTENTS

Warranty definition	page 4
Procedure	page 5

TRACTOR-LIFTER

The 3 points warranty (<i>engine/Gear box/Axles</i>)	page 6
The 13 points warranty (<i>drivetrain</i>)	page 11
Extension new (<i>drivetrain</i>).....	page 16

COURTESY TRACTOR

Conditions.....	page 17
Tariffs.....	page 18

COMBINE HARVESTERS

The 3 points warranty (<i>engine/Gear box/Axles</i>)	page 20
The 13 points warranty (<i>drivetrain</i>)	page 22
Extension new (<i>drivetrain</i>).....	page 26

TOOLS

Warranty details.....	page 28
Tariffs Harvesters - haymakers.....	page 29
Tariffs Harrows	page 30
Tariffs Seeders	page 31
Tariffs Sprayers	page 32
Tariffs Spreaders	page 33
Tariffs Loaders - Trailers	page 34
Tariffs Balers.....	page 35
Tariffs Other.....	page 36

CONTACTS	page 37
-----------------------	---------



DEFINITION OF THE WARRANTY

The warranty covers repairs due to a fault or a mechanical incident that occurs in a randomly manner.

>>> What the warranty doesn't cover

- ▶ standard wear and tear of covered parts
see the highly recommended option below
- ▶ leaks from joints
- ▶ 'Wear parts' (eg : filter, friction discs, hoses, belts...)
- ▶ maintenance and adjustments
- ▶ poor workmanship
- ▶ incidents existing prior to start of the warranty
- ▶ improper use of the material
- ▶ incidents arising from poor maintenance
- ▶ vehicle recovery
- ▶ on-site repairs – **see option below**
- ▶ joints, small parts and ingredients remain the responsibility of the end user

WARRANTY OPTIONS



>>> WEAR and TRAVEL Option

This option enables support for normal aging of parts covered by the guarantee contract. It also provides support for on-site travel.

Support for any necessary on-site travel and repairs limited to a distance of 45 miles.



SUPPORT PROCEDURE OF THE WARRANTY

1

>>> Declaration

Declaration of breakdown within 3 days

2

>>> Intervention

no intervention without our consent

3

>>> Diagnosis

Send a cost estimate or pre-diagnostic by fax

4

>>> Expertise

> In case of expertise, on machines or parts, this will be done in 48 hours.

5

>>> Agreement

> Upon receipt of our consent, you can carry out works.

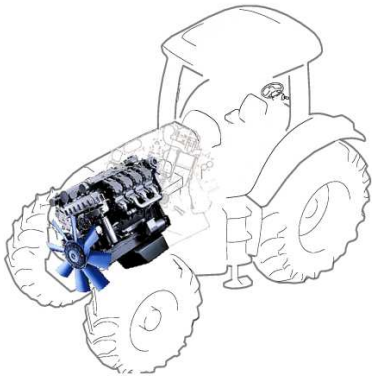
6

>>> Invoice

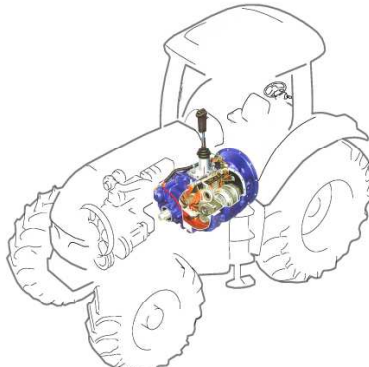
> Invoice Euroola the amount of the support.



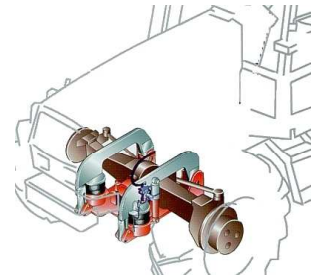
TRACTORS-LIFTERS – 3 points cover



● Engine bloc



● Gear box
*Transmission,
PTO*



● Front and Rear axles

>>> What the warranty covers – in detail

- 1. Engine (Internal parts only) :** Pistons, connecting rods, crankshaft, cylinder or sleeve, oil pump, cylinder head (valves, lifters, camshaft ...) and gasket as well as all mechanical damage affecting the engine block as a direct result of the fault.
- 2. Gear-box and transfer gear-box (Internal parts only) :** detachable parts of the box (gears, shafts, pillow blocks, bearings, synchronizers, circlips, shift forks, automatic actuator), planetary gear system, hydraulic and mechanical terminal block as well as all mechanical damage affecting the housing as a direct result of the breakdown.
- 3. Front and rear axles (Internal parts only) :** detachable parts of the movable axle (gears, halfshafts, differentials, and ring gears) for normal use, planetary gearhead, PTO drive, and damage affecting the casing as a direct result of the breakdown.

Never covered: NORMAL WEAR (except with wear & travel option), maintenance, adjustments, inspection and testing, ingredients, small supplies, hoses and pipes, wiring harnesses, belts, cables and joints.



TRACTORS-LIFTERS – 3 points cover



3
months

USED VEHICLES

>>> Warranty engine / gear box / axles (details p.6)

Horsepower (ISO) HP	Under 5 years	Under 7 years	Over 7 years	Choice of Maximum per reimbursement
Up to 100 hp	£ 255	£ 290	£ 325	base : £ 1250 double:1,47x subscription triple:1,71x subscription
With wear option	£ 455	£ 462	£ 520	
Up to 140 ch	£ 360	£ 416	£ 480	base : £ 1650 double:1,36x subscription triple:1,5x subscription
With wear option	£ 580	£ 665	£ 767	
Up to 210 ch	£ 490	£ 550	£ 623	base : £ 2050 double:1,29x subscription triple:1,39x subscription
With wear option	£ 780	£ 880	£ 995	
Over 210 ch	£ 618	£ 708	£ 806	base : £ 2500 double:1,22x subscription triple:1,28x subscription
With wear option	£ 990	£ 1132	£ 1290	

Cover limited to 250 hours for 3 months

(Prices valid until 31/12/2014 – Excl. all taxes)

**Wear and travel
option**

ESSENTIAL
WITHOUT MAINTENANCE RECORDS
HIGHLY RECOMMENDED
If over 2 years or 2,000 hours

**Maximum
per reimbursement**

Choice of Maximum
Apply coefficient to subscription to
double ou triple thebase maximum.



TRACTORS-LIFTERS – 3 points cover



6
months

USED VEHICLES

>>> Warranty engine / gear box / axles (details p.6)

Horsepower (ISO) HP	Under 5 years	Under 7 years	Over 7 years	Choice of Maximum per reimbursement
Up to 100 hp With wear option	£ 290 £ 462	£ 325 £ 520	£ 370 £ 594	base : £ 1,250 double:1,47x subscription triple:1,71x subscription
Up to 140 ch With wear option	£ 425 £ 680	£ 490 £ 780	£ 552 £ 883	base : £ 1,650 double:1,36x subscription triple:1,5x subscription
Up to 210 ch With wear option	£ 560 £ 900	£ 640 £1027	£ 732 £ 1170	base : £ 2,050 double:1,29x subscription triple:1,39x subscription
Over 210 ch With wear option	£ 715 £ 1145	£ 820 £ 1313	£ 934 £ 1495	base : £ 2,500 double:1,22x subscription triple:1,28x subscription
Cover limited to 500 hours for 6 months				

(Prices valid until 31/12/2014 – Excl. all taxes)



**Wear and travel
option**

ESSENTIAL
WITHOUT MAINTENANCE RECORDS
HIGHLY RECOMMENDED
If over 2 years or 2,000 hours



**Maximum
per reimbursement**

Choice of Maximum
Apply coefficient to subscription to
double ou triple thebase maximum.



TRACTORS-LIFTERS – 3 points cover



12 months

USED VEHICLES

>>> Warranty engine / gear box / axles (details p.6)

Horsepower (ISO) HP	Under 5 years	Under 7 years	Over 7 years	Choice of Maximum per reimbursement
Up to 100 hp With wear option	£ 335 £ 536	£ 380 £ 608	£ 435 £ 695	base : £ 1,250 double: 1,47x subscription triple: 1,71x subscription
Up to 140 ch With wear option	£ 490 £ 780	£ 550 £ 883	£ 633 £ 1,013	base : £ 1,650 double: 1,36x subscription triple: 1,5x subscription
Up to 210 ch With wear option	£ 650 £ 1,040	£ 741 £ 1,186	£ 840 £ 1,345	base : £ 2,050 double: 1,29x subscription triple: 1,39x subscription
Over 210 ch With wear option	£ 828 £ 1,325	£ 950 £ 1,520	£ 1,085 £ 1,736	base : £ 2,500 double: 1,22x subscription triple: 1,28x subscription
Cover limited to 750 hours for 12 months				

(Prices valid until 31/12/2014 – Excl. all taxes)

for more than 12 mois, please contact us.

Wear and travel option

ESSENTIAL
WITHOUT MAINTENANCE RECORDS
HIGHLY RECOMMENDED
If over 2 years or 2,000 hours

Maximum per reimbursement

Choice of Maximum
Apply coefficient to subscription to double ou triple the base maximum

Tractors under Warranty don't just imagine them

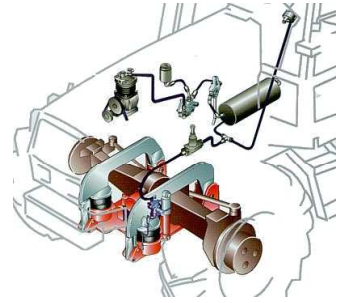
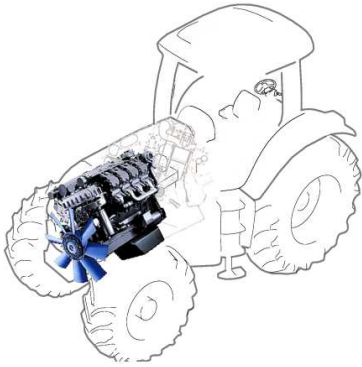


010114 - v0

www.eurola-eu.co.uk
Specialist of the mechanical warranty



TRACTORS-LIFTERS – 13 points cover





TRACTORS-LIFTERS – 13 points cover

>>> Details of the covered points

1. **Engine (Internal parts only)** : Pistons, connecting rods, crankshaft, cylinder or sleeve, oil pump, cylinder head (valves, lifters, camshaft ...) and gasket as well as all mechanical damage affecting the engine block as a direct result of the fault.
2. **Front and rear axles (Internal parts only)** : detachable parts of the movable axle (gears, halfshafts, differentials, and ring gears) for normal use, planetary gearhead, PTO drive, and damage affecting the casing as a direct result of the breakdown.
3. **Gear-box and transfer gear-box (Internal parts only)** : detachable parts of the box (gears, shafts, pillow blocks, bearings, synchronizers, circlips, shift forks, automatic actuator), planetary gear system, hydraulic and mechanical terminal block as well as all mechanical damage affecting the housing as a direct result of the breakdown.
4. **Electrical Circuit of the engine** : alternator, starter, electronic management modules, electrical or mechanical fuel pump, sensors (engine management, gearbox, axles). Excluding harnesses, buttons and switches.
5. **Brakes** : oil immersed brakes, master cylinder, servo, vacuum pump. Excluding friction discs.
6. **Fuel system and Hydraulics** : Fuel injection pump, distributor, regulator, mechanical or electric fuel pump, injection pump (if < 5000 hours), excluding spark plugs and mechanical injectors, hydraulic motor and pumps, manifold, valves and actuators, tractor lifting system (excluding friction discs and cylinders).
7. **Cooling System**: water pump, radiators and heating (apart from piercing or impact), fan systems and oil cooler, calorstat, apart from hoses and pipes.
8. **Clutch**: immersed clutch, clutch mechanism (except parts liable to friction, disc linkages and cables).
9. **Boost circuit of the engine**: turbocompressor.
10. **Steering** : high pressure pump, steering cylinder, mechanical or assisted steering rack
11. **Transmission** : Transmission shaft if the protective elements and housings are intact.
12. **Air Conditioning**: compressors, radiator (apart from piercing or impact), excluding: gas refills.
13. **Electric accessories** : Wiper motor, Heating motor.

Never covered: NORMAL WEAR (except with wear & travel option), maintenance, adjustments, inspection and testing, ingredients, small supplies, hoses and pipes, wiring harnesses, belts, cables and joints.



TRACTORS-LIFTERS – 13 points cover



3
months

USED VEHICLES

>>> Warranty Drivetrain (details p.12)

Horsepower (ISO) HP	Under 3 years and 1800 H	Under 6 years and 3600 H	Over 6 years and 3600 H	Choice of Maximum per reimbursement
Up to 100 hp	£ 323	£ 539	£ 631	base : £ 2,460 double: 1,22x subscription triple: 1,28x subscription
With wear option	£ 517	£ 863	£ 1,010	
Up to 140 ch	£ 437	£ 549	£ 935	base : £ 2,870 double: 1,18x subscription
With wear option	£ 699	£ 877	£ 1,496	
Up to 210 ch	£ 626	£ 1,090	£ 1,290	base : £ 3,280 double: 1,14x subscription
With wear option	£ 1,000	£ 1,747	£ 2,064	
Over 210 ch	£ 760	£ 1,329	£ 1,574	base : £ 3,690 double: 1,12x subscription
With wear option	£ 1,216	£ 2,127	£ 2,520	

Cover limited to 250 hours for 3 months

(Prices valid until 31/12/2014 – Excl. all taxes)

Wear and travel option

ESSENTIAL
WITHOUT MAINTENANCE RECORDS
HIGHLY RECOMMENDED
If over 2 years or 2,000 hours

Maximum per reimbursement

Choice of Maximum
Apply coefficient to subscription to double or triple the base maximum



TRACTORS-LIFTERS – 13 points cover



6
months

USED VEHICLES

>>> Warranty Drivetrain (details p.12)

Horsepower (ISO) HP	Under 3 years and 1800 H	Under 6 years and 3600 H	Over 6 years and 3600 H	Choice of Maximum per reimbursement
Up to 100 hp With wear option	£ 368 £ 590	£ 617 £ 988	£ 727 £ 1,164	base : £ 2,050 double: 1,29x subscript triple: 1,39x subscript
Up to 140 ch With wear option	£ 497 £ 796	£ 912 £ 1,460	£ 1,078 £ 1,724	base : £ 2,460 double: 1,22x subscript triple: 1,28x subscript
Up to 210 ch With wear option	£ 718 £ 1,150	£ 1,253 £ 2,004	£ 1,483 £ 2,374	base : £ 2,870 double: 1,18x subscript
Over 210 ch With wear option	£ 866 £ 1,386	£ 1,521 £ 2,435	£ 1,808 £ 2,893	base : £ 3,280 double: 1,14x subscript
Cover limited to 500 hours for 6 months				

(Prices valid until 31/12/2014 – Excl all taxes)

Wear and travel
option

ESSENTIAL
WITHOUT MAINTENANCE RECORDS
HIGHLY RECOMMENDED
If over 2 years or 2,000 hours

Maximum
per reimbursement

Choice of Maximum

Apply coefficient to subscription to
double ou triple thebase maximum



TRACTORS-LIFTERS – 13 points cover



12 months

USED VEHICLES

>>> Warranty Drivetrain (details p.12)

Horsepower (ISO) HP	Under 3 years and 1800 H	Under 6 years and 3600 H	Over 6 years and 3600 H	Choice of Maximum per reimbursement
Up to 100 hp With wear option	£ 443 £ 708	£ 784 £ 1,254	£ 922 £ 1,474	base : £ 1,640 double:1,36x subscript triple:1,5x subscript
Up to 140 ch With wear option	£654 £ 1,047	£ 1,142 £ 1,828	£ 1,364 £ 2,182	base : £ 2,050 double:1,29x subscript triple:1,39x subscript
Up to 210 ch With wear option	£ 902 £ 1,444	£ 1,584 £ 2,535	£ 1,740 £ 2,786	base : £ 2,460 double:1,22x subscript triple:1,28x subscript
Over 210 ch With wear option	£ 1,092 £ 1,748	£ 1,913 £ 3,061	£ 2,260 £ 3,616	base : £ 2,870 double:1,18x subscript
Cover limited to 750 hours for 12 months				

(Prices valid until 31/12/2014 – Excl. all taxes)

for 24 months or more, please contact us

Wear and travel option

ESSENTIAL
WITHOUT MAINTENANCE PROOF
HIGHLY RECOMMENDED
If over 2 years or 2,000 hours

Maximum per reimbursement

Choice of Maximum
Apply coefficient to subscription to double ou triple thebase maximum



TRACTORS-LIFTERS – 13 points cover



NEW tractors

>>> Warranty drivetrain (details p.12)

Horsepower (ISO) HP	ADD YEARS GUARANTEED				Choice of Maximum per reimbursement
	The 2 nd Year Of the machine	The 3 rd Year Of the machine	The 4 th Year Of the machine	The 5 th Year Of the machine	
Up to 100 hp	£ 396	£ 465	£ 550	£ 645	base : £ 2,050 double: 1,29x subscript triple: 1,39x subscript
With wear option	£ 634	£ 744	£ 877	£ 1,032	
Up to 140 hp	£ 590	£ 690	£ 820	£ 968	base : £ 2,460 double: 1,22x subscript triple: 1,28x subscript
With wear option	£ 945	£ 1,106	£ 1,311	£ 1548	
Up to 210 hp	£ 787	£ 927	£ 1,100	£ 1,293	base : £ 2,870 double: 1,18x subscript
With wear option	£ 1,260	£ 1,483	£ 1758	£ 2,070	
Over 210 hp	£ 995	£ 1,172	£ 1,387	£ 1,630	base : £ 3,280 double: 1,14x subscript
With wear option	£ 1,590	£ 1,875	£ 2,220	£ 2,609	

Cover limited to 750 hours per guaranteed year

(Prices valid until 31/12/2014 – Excl. all taxes)



**Wear and travel
option**

ESSENTIAL
WITHOUT MAINTENANCE RECORDS
HIGHLY RECOMMENDED
If over 2 years or 2,000 hours

**Maximum
per reimbursement**



Choice of Maximum
Apply coefficient to subscription to
double ou triple thebase maximum



RENTAL TRACTOR

This support can only intervene in case of a breakdown or a mechanical incident with random origin excluding accidents , maintenance operations ...

CONDITIONS

- Only supports a courtesy vehicle in the case of more than 48 hours vehicle downtime.
- There is no support if the disabled vehicle is not repaired.
- Support for the courtesy vehicle from the first hour of the loan (machine operation) and 50 hours maximum (base reimbursement **£ 0.15 / hp / hour**)
- Support is for a courtesy vehicle of the same power, (or same value new), as the disabled vehicle or, in case of unavailability within range, just above.
- The policy only covers the operating hours of the courtesy vehicle during the downtime required for the repairs to the disabled vehicle, other than the repair centre being unavailable.

COMPENSATION

- Compensation in the event of unavailability of a courtesy car by a professional.
- Compensation package for £ 37 capital per day excl. tax and for 5 days maximum.

STEPS

- 1) Declaration of the damage within 3 days - 2) The client chooses the provider of the loan vehicle – 3) after studying the pro-forma or pre-repair diagnostic, we confirm support and ask for machine hours by fax for calculating compensation – 4) We confirm the amount covered – 5) The repair centre sends us an Invoice for the amount of the repair covered – 6) We settle with the repair centre directly.
- In case of direct compensation to the customer (if a courtesy vehicle is unavailable), the customer has to make a request by mail.

RESPONSABILITIES

EUROLA does not cover loss of production, caretaking costs, different penalties or fines.



RENTAL TRACTOR



Rental Tractors

Horsepower (hp ISO)	Duration 6 months	Duration 12 months	Additional year
Up to 100 ch	£ 82	£ 164	+ £ 103
Up to 140 ch	£ 115	£ 230	+ £ 139
Up to 210 ch	£ 173	£ 340	+ £ 200
Over 210 ch	£ 246	£ 496	+ £ 300

(Prices valid until 31/12/2014 – Excl. all taxes)

>>> What the warranty covers



IMMOBILISATION

More than 48h, courtesy vehicle (of same power or of power just above) supported from first hour and for max 50h (base reimbursement £0.15/hp/h)



>>> The reimbursement

To provider
Of the courtesy
vehicle



To customer
Fixed in case of unavailability
of the courtesy vehicle
(fixed amount reimbursement
£ 37/day with a maximum
£ 185)

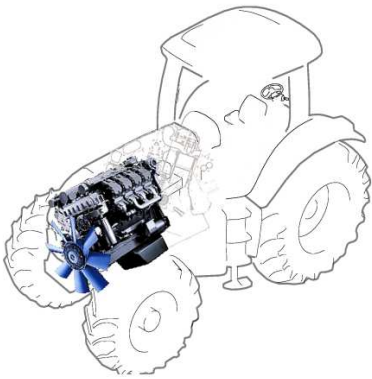
In case of a breakdown
don't let nature
do the rest



010114 - v0

www.eurola-eu.co.uk
Specialist of the mechanical warranty

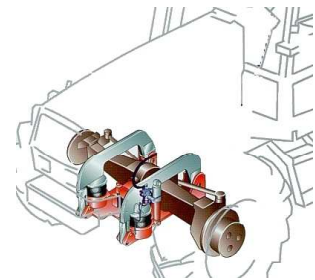
COMBINE-HARVESTERS – 3 points cover



● Engine bloc



● Gear box
*Transmission,
Power take-off (PTO)*



● Front and rear axles

>>> What the warranty covers – in detail

4. **Engine (Internal parts only)** : Pistons, connecting rods, crankshaft, cylinder or sleeve, oil pump, cylinder head (valves, lifters, camshaft ...) and gasket as well as all mechanical damage affecting the engine block as a direct result of the fault.
5. **Gear-box and transfer gear-box (Internal parts only)** : detachable parts of the box (gears, shafts, pillow blocks, bearings, synchronizers, circlips, shift forks, automatic actuator), planetary gear system, hydraulic and mechanical terminal block as well as all mechanical damage affecting the housing as a direct result of the breakdown.
6. **Front and rear axles (Internal parts only)** : detachable parts of the movable axle (gears, halfshafts, differentials, and ring gears) for normal use, planetary gearhead, PTO drive, and damage affecting the casing as a direct result of the breakdown.

Never covered: NORMAL WEAR (except with wear & travel option), maintenance, adjustments, inspection and testing, ingredients, small supplies, hoses and pipes, wiring harnesses, belts, cables and joints



COMBINE-HARVESTERS – 3 points cover

USED VEHICLES

>>> Warranty engine / gear box / axles (details p.20)

Horsepower (hp ISO)	Under 3 years and 900 hours	Under 6 years and 1800 hours	Over 6 years or 1800 hours	Choice of Maximum per reimbursement
Up to 250hp	£ 498	£ 524	£ 565	base: £ 2,050 double:1,29x subscript triple:1,39x subscript
With wear option	£ 796	£ 840	£ 904	
Up to 350hp	£ 665	£ 705	£ 788	base: £ 2,460 double:1,22x subscript triple:1,28x subscript
With wear option	£ 1,064	£ 1,128	£ 1,208	
Up to 500hp	£ 863	£ 909	£ 990	base: £ 2,870 double:1,18x subscript
With wear option	£ 1,382	£ 1,453	£ 1,584	

(duration limited to 18 months)

limited to
100
hours

Horsepower (hp ISO)	Under 3 years and 900 hours	Under 6 years and 1800 hours	Over 6 years or 1800 hours	Choice of Maximum per reimbursement
Up to 250hp	£ 574	£ 600	£ 651	base: £ 2,050 double:1,29x subscript triple:1,39x subscript
With wear option	£ 919	£ 962	£ 1,041	
Up to 350 hp	£ 763	£ 805	£ 872	base: £ 2,460 double:1,22x subscript triple:1,28x subscript
With wear option	£ 1,222	£ 1,288	£ 1,396	
Up to 500 hp	£ 995	£ 1,045	£ 1,135	base: £ 2,870 double:1,18x subscript
With wear option	£ 1591	£ 1,671	£ 1,815	

(duration limited to 18 months)

limited to
200
hours

Horsepower (hp ISO)	Under 3 years and 900 hours	Under 6 years and 1800 hours	Over 6 years or 1800 hours	Choice of Maximum per reimbursement
Up to 250hp	£ 655	£ 690	£ 745	base: £ 2,050 double:1,29x subscript triple:1,39x subscript
With wear option	£ 1,048	£ 1,106	£ 1,193	
Up to 350 hp	£ 877	£ 923	£ 1,004	base: £ 2,460 double:1,22x cotisation triple:1,28x cotisation
With wear option	£ 1,404	£ 1,475	£ 1,606	
Up to 500 hp	£ 1,150	£ 1,202	£ 1,306	base: £ 2,870 double:1,18x subscript
With wear option	£ 1,838	£ 1,925	£ 2,090	

(duration limited to 18 months)

limited to
300
hours

(validité des tarifs 31/12/2014 – TVA 20%)

Option usure et déplacement

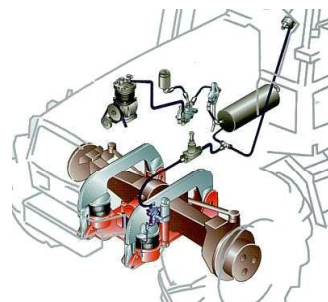
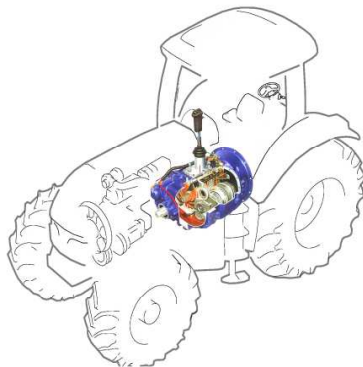
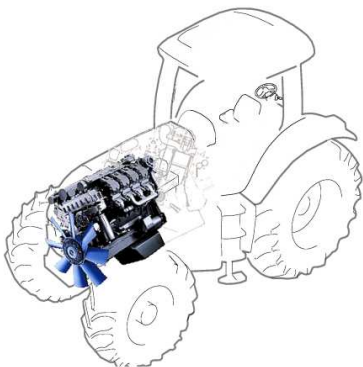
ESSENTIAL
WITHOUT MAINTENANCE
RECORDS HIGHLY
RECOMMENDED

Maximum
per reimbursement

Choice of Maximum
Apply coefficient to subscription to double ou triple thebase maximum



COMBINE HARVESTERS – 13+6 points cover





COMBINE HARVESTERS – 13+6 points cover

>>> Details of the covered points

1.Engine (Internal parts only) : Pistons, connecting rods, crankshaft, cylinder or sleeve, oil pump, cylinder head (valves, lifters, camshaft ...) and gasket as well as all mechanical damage affecting the engine block as a direct result of the fault.

2.Front and rear axles (Internal parts only) : detachable parts of the movable axle (gears, halfshafts, differentials, and ring gears) for normal use, planetary gearhead, PTO drive, and damage affecting the casing as a direct result of the breakdown.

3.Gear-box and transfer gear-box (Internal parts only) : detachable parts of the box (gears, shafts, pillow blocks, bearings, synchronizers, circlips, shift forks, automatic actuator), planetary gear system, hydraulic and mechanical terminal block as well as all mechanical damage affecting the housing as a direct result of the breakdown.

4.Electrical Circuit of the engine : alternator, starter, electronic management modules, electrical or mechanical fuel pump, sensors (engine management, gearbox, axles). Excluding harnesses, buttons and switches.

5.Brakes : oil immersed brakes, master cylinder, servo, vacuum pump. Excluding friction discs.

6.Fuel system and Hydraulics : Fuel injection pump, distributor, regulator, mechanical or electric fuel pump, injection pump (if < 5000 hours), excluding spark plugs and mechanical injectors, hydraulic motor and pumps, manifold, valves and actuators, tractor lifting system (excluding friction discs and cylinders).

7.Cooling System: water pump, radiators and heating (apart from piercing or impact), fan systems and oil cooler, calorstat, apart from hoses and pipes.

8.Clutch: immersed clutch, clutch mechanism (except parts liable to friction, disc linkages and cables).

9.Boost circuit of the engine: turbocompressor.

10.Steering : high pressure pump, steering cylinder, mechanical or assisted steering rack

11.Transmission : Transmission shaft if the protective elements and housings are intact.

12.Air Conditioning: compressors, radiator (apart from piercing or impact), excluding: gas refills.

13.Electric accessories : Wiper motor, Heating motor.

Never covered: NORMAL WEAR (except with wear & travel option), maintenance, adjustments, inspection and testing, ingredients, small supplies, hoses and pipes, wiring harnesses, belts, cables and joints



COMBINE HARVESTERS – 13+6 points cover

- Hydraulic

- Engine and pumps

- Electronic

Example of coverage on Combine-harvester



The threshing: coverage of the drive mechanism of rollers and camshafts but not the rollers (see exclusions).



Drive mechanism : coverage excluding wear parts such drive belts or chain (see exclusions)



grain separation: coverage of drive mechanism of grates and camshafts but not grates (see exclusions).



Cutting bar clutch: coverage of clutch mechanism excluding friction discs which are wear parts..

>>> Details of the covered parts-

1. Engines and auxiliary pumps: electrical or mechanical.
2. PTO housing primary: gears, shafts and planetary gear.
3. Electronic: electronic box, laser-guided and sensor-related cases except wiring harnesses. (It will be privileged repairing of the electronics box).
4. Hydraulics: engine and hydraulic pumps, manifold, valves and actuators (except jacks).
5. Steering: self guiding mechanism
6. Mechanical drive: all drive mechanism, mechanical housings, bearings and gear wheel.

Excludes: belts, friction discs, chains, flexible hoses, cutting parts plow scraping and gathering, threshing system shaker grate and separation of grains, all parts of friction and wear.

COMBINE HARVESTERS – 13+6 points cover

USED VEHICLES

>>> Warranty Drivetrain+Tools (details p.23&24)

Horsepower (hp ISO)	Under 3 years and 900 hours	Under 6 years and 1800 hours	Over 6 years or 1800 hours	Choice of Maximum per reimbursement
Up to 250hp	£ 646	£ 1,045	£ 1,130	base: £ 2,060
With wear option	£ 1,035	£ 1,671	£ 1,810	double:1,29x subscript triple:1,39x subscript
Up to 350hp	£ 1,053	£ 1,396	£ 1,515	base: £ 2,870
With wear option	£ 1,382	£ 2,235	£ 2,423	double:1,22x subscript triple:1,28x subscript
Up to 500hp	£ 937	£ 1,518	£ 1,647	base: £ 3,280
With wear option	£ 1,500	£ 2,430	£ 2,634	double:1,18x subscript

(duration limited to 18 months)

Limited to
100
hours

Horsepower (hp ISO)	Under 3 years and 900 hours	Under 6 years and 1800 hours	Over 6 years or 1800 hours	Choice of Maximum per reimbursement
Up to 250hp	£ 745	£ 1,203	£ 1,302	base: £ 2,060
With wear option	£ 1,193	£ 1,925	£ 2,083	double:1,29x subscript triple:1,39x subscript
Up to 350 hp	£ 995	£ 1,610	£ 1,744	base: £ 2,870
With wear option	£ 1,590	£ 2,575	£ 2,792	double:1,22x subscript triple:1,28x subscript
Up to 500 hp	£ 1,082	£ 1,744	£ 1,895	base: £ 3,280
With wear option	£ 1,730	£ 2,791	£ 3,032	double:1,18x subscript

(duration limited to 18 months)

Limited to
200
hours

Horsepower (hp ISO)	Under 3 years and 900 hours	Under 6 years and 1800 hours	Over 6 years or 1800 hours	Choice of Maximum per reimbursement
Up to 250hp	£ 855	£ 1,383	£ 1,497	base: £ 2,060
With wear option	£ 1,367	£ 2,214	£ 2,394	double:1,29x subscript triple:1,39x subscript
Up to 350 hp	£ 1,143	£ 1,848	£ 2,007	base: £ 2,870
With wear option	£ 1,829	£ 2,958	£ 3,211	double:1,22x cotisation triple:1,28x cotisation
Up to 500 hp	£ 1,243	£ 2,004	£ 2,177	base: £ 3,280
With wear option	£ 1,990	£ 3,207	£ 3,484	double:1,18x subscript

(duration limited to 18 months)

Limited to
300
hours

(Prices valid until 31/12/2014 – Excl. all taxes)

Wear and travel Option

ESSENTIAL WITHOUT MAINTENANCE PROOF HIGHLY RECOMMENDED

010114 - v0

Maximum per reimbursement

Choice of Maximum
Apply coefficient to subscription to double or triple the base maximum.



COMBINE-HARVESTERS – 13+6 points cover

New Machines

>>> Warranty Drivetrain + Tools (details p. 20,22)

Horsepower (hp ISO)	Manufacture warranty 1 year	ADD YEARS GUARANTEED				Choice of Maximum per reimbursement
		Extension of 1 year warranty or 600 H	Extension of 2 years warranty or 900 H	Extension of 3 years warranty or 1200 H	Extension of 4 years warranty or 1500 H	
Up to 250hp With wear option	See manufacturer	£ 647 £ 1,035	£ 745 £ 1,193	£ 841 £ 1,346	£ 1,045 £ 1,671	base : £ 2,460 double: 1,22x cotisation triple: 1,28x cotisation
Up to 350hp With wear option		£ 863 £ 1,382	£ 995 £ 1,590	£ 1,125 £ 1,800	£ 1,396 £ 2,235	base : £ 2,870 double: 1,18x cotisation
Up to 500hp With wear option		£ 937 £ 1,500	£ 1,082 £ 1,730	£ 1,221 £ 1,953	£ 1,518 £ 2,428	base : £ 3,280 double: 1,14x cotisation
Cover limited to 300 hours per year guaranteed						

(Prices valid until 31/12/2014 – Excl. all taxes)

Wear and travel Option

ESSENTIAL
Without maintenance records
HIGHLY RECOMMENDED
If more than 2 years or 2000 hours

Maximum per reimbursement

Choice of Maximum
Apply coefficient to subscription to double or triple the base maximum

In case of a breakdown
do not wait
for time to do the rest





TOOLS – 6 points cover

- Hydraulic

- Engine and pumps

- Electronic

>>> Details of the covered parts-

1. Engines and auxiliary pumps: electrical or mechanical.
2. PTO housing primary: gears, shafts and planetary gear.
3. Electronic: electronic box, laser-guided and sensor-related cases except wiring harnesses. (It will be privileged repairing of the electronics box).
4. Hydraulics: engine and hydraulic pumps, manifold, valves and actuators (except jacks).
5. Steering: self guiding mechanism
6. Mechanical drive: all drive mechanism, mechanical housings, bearings and gear wheel.

Excludes: belts, friction discs, chains, flexible hoses, cutting parts plow scraping and gathering, threshing system shaker grate and separation of grains, all parts of friction and wear.



MOWERS-TEDDERS – 6 points cover

New and Used equipment

>>> Tool warranty (details p.28)

New value	EXTENSION NEW	USED	Maximum per damage
Up to £ 16,400	£ 199	£ 224	£ 1,250
With Wear option	£ 317	£ 358	
Up to £ 32,800	£ 400	£ 444	£ 1,650
With Wear option	£ 640	£ 709	
Up to £ 57,400	£ 672	£ 754	£ 2,450
With Wear option	£ 1,074	£ 1,205	

6
months

New value	EXTENSION NEW	USED	Maximum per damage
Up to 16,400	£ 250	£ 280	£ 1,650
With Wear option	£ 399	£ 448	
Up to 32,800	£ 503	£ 560	£ 2,450
With Wear option	£ 806	£ 895	
Up to 57,400	£ 848	£ 947	£ 3,300
With Wear option	£ 1,357	£ 1,515	

12
months

(Prices valid until 31/12/2014- Exl. all taxes)

Wear and travel
option

ESSENTIAL

Without maintenance records

HIGHLY RECOMMENDED

If more than 2 years



HARROWS – 6 points cover

New and Used equipment

>>> Tool warranty (details p.28)

New value	EXTENSION NEW	USED	Maximum per damage
<i>Up to £ 12,300</i>	£ 198	£ 216	£ 1,640
<i>With Wear option</i>	£ 317	£ 344	
<i>Up to £ 24,600</i>	£ 237	£ 262	£ 1,640
<i>With Wear option</i>	£ 379	£ 420	
Cover extended to cutter bars (pinions)			

6
months

New value	EXTENSION NEW	USED	Maximum per damage
<i>Up to 12,300</i>	£ 250	£ 271	£ 1,640
<i>With Wear option</i>	£ 399	£ 434	
<i>Up to 24,600</i>	£ 300	£ 331	£ 1,640
<i>With Wear option</i>	£ 482	£ 531	
Cover extended to cutter bars (pinions)			

12
months

(Prices valid until 31/12/2014 – Excl. all taxes)

**Wear and travel
option**



ESSENTIAL
Without maintenance records
HIGHLY RECOMMENDED
If more than 2 years



SEEDERS – 6 points cover

New and Used equipment
 >>> Tool warranty (details p.28)

New value	EXTENSION NEW	USED	Maximum per damage
<i>Up to £ 16,400</i>	£ 224	£ 245	£ 1,640
<i>With Wear option</i>	£ 358	£ 393	
<i>Up to £ 41,000</i>	£ 499	£ 551	£ 1,640
<i>With Wear option</i>	£ 799	£ 882	
<i>Up to £ 98,400</i>	£ 676	£ 800	£ 1,640
<i>With Wear option</i>	£ 1,082	£ 1,280	

6
months

New value	EXTENSION NEW	USED	Maximum per damage
<i>Up to £ 16,400</i>	£ 286	£ 310	£ 1,640
<i>With Wear option</i>	£ 454	£ 496	
<i>Up to £ 41,000</i>	£ 630	£ 698	£ 1,640
<i>With Wear option</i>	£ 1,005	£ 1,116	
<i>Up to £ 98,400</i>	£ 853	£ 1,008	£ 1,640
<i>With Wear option</i>	£ 1,364	£ 1,612	

12
months

(Prices valid until 31/12/2014 – Excl. all taxes)

Wear and travel
option

ESSENTIAL

Without maintenance records

HIGHLY RECOMMENDED

If more than 2 years



SPRAYERS – 6 points cover

New and Used equipment

>>> Tools warranty (details p.28)

Type of machine	EXTENSION NEW	USED	Maximum per damage
CARRIED	£ 237	£ 254	£ 1,640
With Wear option	£ 380	£ 407	
PULLED	£ 254	£ 293	£ 1,640
With Wear option	£ 407	£ 468	

6
months

Type de machine	EXTENSION NEW	USED	Maximum per damage
CARRIED	£ 302	£ 331	£ 1,640
With Wear option	£ 482	£ 531	
PULLED	£ 336	£ 380	£ 1,640
With Wear option	£ 537	£ 606	

12
months

(Prices valid until 31/12/2014 – Excl. all taxes)

Wear and travel
option

ESSENTIAL
Without maintenance records
HIGHLY RECOMMENDED
If more than 2 years



SPREADERS – 6 points cover

New and Used equipment

>>> Tools warranty (details p.28)

New value	EXTENSION NEW	USED	Maximum per damage
Up to £ 8,200	£ 130	£ 142	£ 1,640
With Wear option	£ 207	£ 227	
Up to £ 20,500	£ 217	£ 237	£ 1,640
With Wear option	£ 344	£ 380	

6
months

New value	EXTENSION NEW	USED	Maximum per damage
Up to £ 8,200	£ 164	£ 180	£ 1,640
With Wear option	£ 262	£ 289	
Up to £ 20,500	£ 271	£ 297	£ 1,640
With Wear option	£ 434	£ 476	

12
months

(Prices valid until 31/12/2014 – Excl. all taxes)

Wear and travel
option

ESSENTIAL
Without maintenance records
HIGHLY RECOMMENDED
If more than 2 years



LOADING TRAILERS – 6 points cover

New and Used equipment

>>> Tools warranty (details p.28)

Type of machine	EXTENSION NEW	USED	Maximum per damage
ALL MODELS	£ 371	£ 422	£ 1,640
With Wear option	£ 592	£ 675	

6

months

Type of machine	EXTENSION NEW	USED	Maximum per damage
ALL MODELS	£ 469	£ 530	£ 2,460
With Wear option	£ 751	£ 847	

12

months

(Prices valid until 31/12/2014 – Excl. all taxes)

Wear and travel
option



ESSENTIAL

Without maintenance records

HIGHLY RECOMMENDED

If more than 2 years



BALERS – 6 points cover

New and Used equipment
>>> Tools warranty (details p.28)

New value	EXTENSION NEW	USED	Choice of Maximum per reimbursement
<i>Up to £ 16,400</i>	£ 198	£ 200	£ 1,650
<i>With Wear option</i>	£ 317	£ 510	
<i>Up to £ 32,800</i>	£ 323	£ 513	£ 2,450
<i>With Wear option</i>	£ 517	£ 820	
<i>Up to £ 57,400</i>	£ 486	£ 784	£ 3,300
<i>With Wear option</i>	£ 887	£ 1,254	

6
months

New value	EXTENSION NEW	USED	Choice of Maximum per reimbursement
<i>Up to £ 16,400</i>	£ 250	£ 400	£ 1,650
<i>With Wear option</i>	£ 399	£ 393	
<i>Up to £ 41,000</i>	£ 405	£ 650	£ 2,450
<i>With Wear option</i>	£ 648	£ 1,040	
<i>Up to £ 98,400</i>	£ 616	£ 990	£ 3,300
<i>With Wear option</i>	£ 985	£ 1,584	

12
months

(Prices valid until 31/12/2014 – Excl. all taxes)

**Wear and travel
option**

ESSENTIAL
Without maintenance records
HIGHLY RECOMMENDED
If more than 2 years

In case of a breakdown do not store **call us**



www.eurola-eu.co.uk
Specialist of the mechanical warranty

NOTES

NOTES



SPECIALIST OF THE MECHANICAL WARRANTY NEW AND USED








- > **AUTOMOBILE**
- > **4X4**
- > **MOTORBIKE/QUAD**
- > **MARINE ENGINE**
- > **AGRICULTURE**
- > **PUBLIC WORKS**

EUROLA

**Hamilton House, Mabeldon Place
Bloomsbury, London WC1H 9BB**
N° 0542.551.286 • TVA BE0542551286
IBAN: BE82109660863968 BIC: BKCPBEB1BKB

**mail: info@eurola-be.co.uk
site: www.eurola-be.co.uk
tel. +44 (0) 203 445 0732 fax +44 (0) 203 445 0732**

NOS PARTENAIRES PRIVILEGIES

lubrifiant		Réseau agricole	 
 www.terre-net-occasions.com	Internet		Réseau motoculture
Réseau motoculture		Centrale d'achat	

NOS CLIENTS CONCESSIONNAIRES

	Agricole		Travaux publics
Internet		Travaux Publics	
	Outils agricoles		Télescopique
Agricole		Agricole	